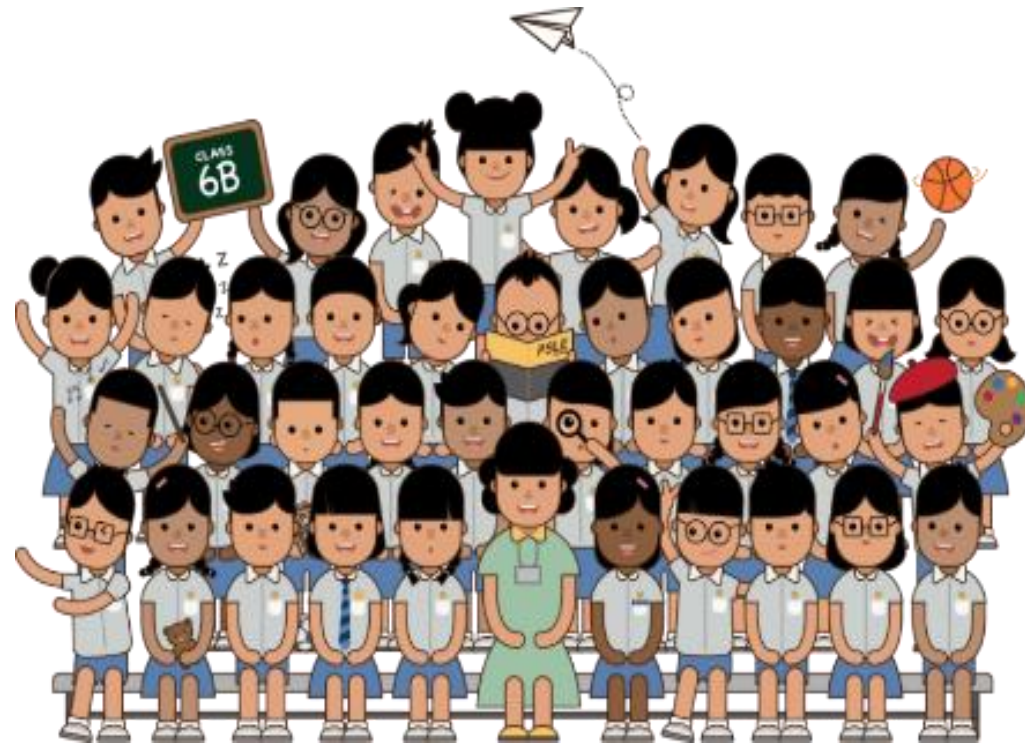


PSLE SCORING AND S1 POSTING SYSTEMS

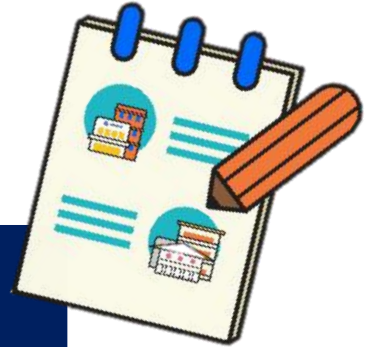


WHAT IS THE INTENT OF THE PSLE?



A useful checkpoint at the end of primary school

A fair way to determine secondary school posting



1

Reducing fine differentiation of students' examination results at a young age.

2

Recognising a student's level of achievement, regardless of how his/her peers have done.

3

Encouraging families to choose secondary schools holistically based on students' strengths, interests and abilities.

HOW THE PSLE SCORING SYSTEM WORKS



FROM T-SCORE TO SCORING BANDS

Reduces fine differentiation of students' examination results at a young age

Reflects a student's individual level of achievement

AL	RAW MARK RANGE
1	≥ 90
2	85 – 89
3	80 – 84
4	75 – 79
5	65 – 74
6	45 – 64
7	20 – 44
8	< 20

GRADING OF FOUNDATION SUBJECT GRADES

- Foundation subjects graded in scoring bands from **AL A to AL C**.
- AL A to AL C for Foundation level subjects are **mapped to AL 6 to AL 8 of Standard level subjects respectively** to derive a student's overall PSLE Score.
- Based on the learning and assessment load of the subjects, and informs students of how ready they are for the curriculum in secondary school.

FOUNDATION LEVEL AL	FOUNDATION RAW MARK RANGE	EQUIVALENT STANDARD LEVEL AL
A	75 – 100	6
B	30 – 74	7
C	< 30	8

4 SUBJECT ALs WILL BE ADDED TO FORM THE OVERALL PSLE SCORE

- The PSLE Score can range from 4 to 32, with 4 being the best.
- Students are placed in secondary school courses based on their PSLE Score – Express, Normal (Academic) or Normal (Technical).

ENGLISH LANGUAGE	AL 3
MOTHER TONGUE LANGUAGE	AL 2
MATHEMATICS	AL 1
SCIENCE	AL 2
PSLE SCORE: 8	

PLACEMENT OUTCOME	PSLE SCORE
EXPRESS	4 – 20
EXPRESS / N(A) OPTION	21 – 22
N(A)	23 – 24
N(A) / N(T) OPTION	25
N(T)	26 – 30, with AL 7 or better in both EL <u>and</u> MA

Express, N(A) and N(T) courses will be phased out by 2024.

ELIGIBILITY CRITERIA FOR HIGHER MOTHER TONGUE LANGUAGE (HMTL)

ELIGIBILITY CRITERIA FOR HMTL

- (i) An overall PSLE Score of 8 or better**
- or**
- (ii) An overall PSLE Score of 9 to 14 (inclusive); and attain**
 - **AL 1 / AL 2 in MTL or**
 - **Distinction / Merit in HMTL**

- The eligibility criteria for taking HMTL takes reference from past criteria.
- It ensures students can cope with the higher academic load.
- Secondary schools continue to have the flexibility to offer HMTL to students who do not meet the criteria if they:
 - have high ability and interest in MTL, and
 - are able to cope with the learning load required.

ELIGIBILITY CRITERIA FOR MOTHER TONGUE LANGUAGE (MTL) 'B' IN SECONDARY SCHOOLS

- The MTL 'B' curriculum is designed to help students in the Express and N(A) courses who face exceptional difficulty coping with MTL.

ELIGIBILITY CRITERIA FOR MTL 'B'
(FOR STUDENTS OFFERED THE EXPRESS OR N(A) COURSE)

AL 7 or 8 in Standard MTL
or
AL B or C in Foundation MTL

- Schools have discretion to offer MTL 'B' to students who face exceptional difficulty with MTL but do not meet the eligibility criteria at Secondary 1 based on PSLE results.
- As students progress in secondary school, they may also take up MTL 'B' if they are assessed to be suitable by their schools.

SUBJECT-BASED BANDING (SECONDARY) [SBB (SEC)] ELIGIBILITY CRITERIA

SBB (SEC) PROVIDES STUDENTS POSTED TO THE N(A) AND (NT) COURSES WITH **GREATER FLEXIBILITY** TO TAKE VARIOUS SUBJECTS AT A MORE DEMANDING LEVEL BASED ON THEIR SUBJECT-SPECIFIC STRENGTHS.

STUDENTS POSTED TO THE EXPRESS COURSE WILL TAKE ALL THEIR SUBJECTS AT THE EXPRESS LEVEL.

FOR STUDENTS POSTED TO THE N(A) OR N(T) COURSE	
PSLE SUBJECT GRADE	OPTION TO TAKE SUBJECT AT
AL 5 or better in a Standard level subject	Express level
AL 6 or better in a Standard level subject <u>OR</u> AL A in a Foundation level subject	N(A) level

SUBJECT-BASED BANDING (SECONDARY) [SBB (SEC)] ELIGIBILITY CRITERIA

**N(A)-Level
English**

**N(A)-Level
Mother Tongue**

**Express-
Level
Math**

**N(A)-Level
Science**

EXAMPLE:

ENGLISH LANGUAGE AL6

MOTHER TONGUE AL6
LANGUAGE

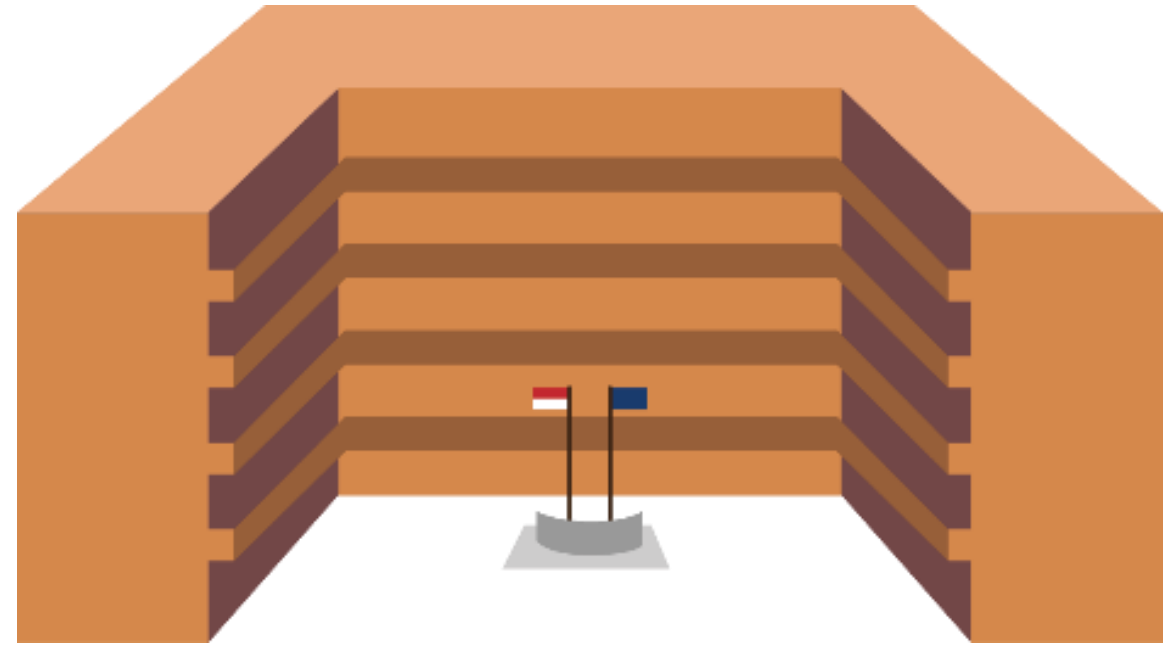
MATHEMATICS AL5

SCIENCE AL6

PSLE SCORE: 23

Offered N(A) course





HOW THE S1 POSTING SYSTEM WORKS

CHOICE ORDER OF SCHOOLS MATTERS MORE

- Students continue to have **six choices** in selecting their secondary schools.
- Similar to past years, students continue to be posted to a secondary school based on **academic merit, i.e., PSLE Score**, and their **school choice order**.
- If there are two or more students with the same PSLE Score vying for the last remaining place(s) in a school, the following tie-breakers will be used in the following order:
 1. **CITIZENSHIP**
 2. **CHOICE ORDER OF SCHOOLS (New tie-breaker from 2021 onwards)**
 3. **COMPUTERISED BALLOTING**
- The new tie-breaker based on school choice order recognises the different considerations that families have in making school choices.








Tie-breakers

in the new S1 Posting System

Tie-breakers are used only if there are two or more students with the same PSLE Score vying for the last available place(s) in a school.

Here's a simplified example.

5 students are vying for the last places in the schools of their choice.

Jane Singapore Citizen 16 pts	SCHOOL CHOICES: 1) Sch A 2) Sch ... 3) Sch ... 4) Sch ...	
Bryan Singapore Citizen 20 pts	SCHOOL CHOICES: 1) Sch B 2) Sch ... 3) Sch ... 4) Sch ...	
Mary Singapore Citizen 20 pts	SCHOOL CHOICES: 1) Sch A 2) Sch B 3) Sch C 4) Sch ...	
Alan Permanent Resident 20 pts	SCHOOL CHOICES: 1) Sch A 2) Sch B 3) Sch D 4) Sch ...	
Rina Permanent Resident 20 pts	SCHOOL CHOICES: 1) Sch A 2) Sch B 3) Sch D 4) Sch E	



Students with better scores will be posted first

Jane has a better PSLE score. She will be posted first, to **School A**.



Tie-breaker #1: Citizenship

Bryan and Mary are Singapore Citizens. They will have priority to enter **School B**.



Bryan, Mary, Alan and Rina have the same score.

As Jane has taken the last available place in School A, Bryan, Mary, Alan and Rina will vie for the last available place in their next choice, **School B**.



Alan and Rina will be tie-broken out as they are Permanent Residents. They will be considered for their next choice, **School D**.



Tie-breaker #2: Choice order of schools

Because Bryan ranked School B higher than Mary, he will be posted to **School B**.



Since Bryan has taken the last place in School B, Mary will be posted to **School C**.



Alan and Rina have both ranked School D as their third choice. They will go through computerised balloting to vie for the last remaining place in **School D**.



Tie-breaker #3: Computerised balloting

Through computerised balloting, Alan is posted to **School D**.



Since Alan has taken the last place in School D, Rina will be posted to her fourth choice, **School E**.

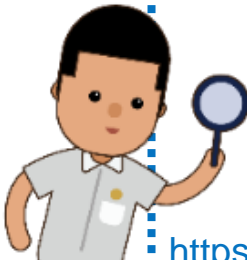




PSLE SCORE RANGES FOR INDIVIDUAL SECONDARY SCHOOLS



PSLE SCORE RANGES FOR ALL SECONDARY SCHOOLS

- Use the PSLE Score ranges as a reference alongside other important factors, such as the school's distinctive programmes, Co-Curricular Activities (CCA), culture, ethos, and proximity to home when shortlisting school choices that would best fit a student's educational needs.
- The 2021 PSLE Score ranges for individual secondary schools will be available for your reference on <https://moe.gov.sg/schoolfinder> and <https://go.gov.sg/exploreschools> by end March 2022. They reflect the PSLE scores of the student posted into these schools at the 2021 S1 Posting Exercise.
- A school's PSLE Score range (including Cut-Off-Point) for a particular year is not pre-determined before the posting, and may vary from year to year, depending on the cohort's PSLE results and their school choices in that year's S1 Posting Exercise.



SchoolFinder Tool	MySkillsFuture Student Portal (Primary)
 https://www.moe.gov.sg/schoolfinder	 https://go.gov.sg/exploreschools

PSLE SCORE RANGES FOR INDIVIDUAL SECONDARY SCHOOLS

The PSLE Score range refers to the PSLE Score of the first and last student admitted to a particular school in the previous year via the S1 Posting Exercise. This shows the range of student profiles who enter each school.

Example

XX Secondary School
PSLE Score range of 2021

Express	15	20
Normal (Academic)	21	24
Normal (Technical)	25	28

PSLE Score of the first student posted into the school in the respective courses

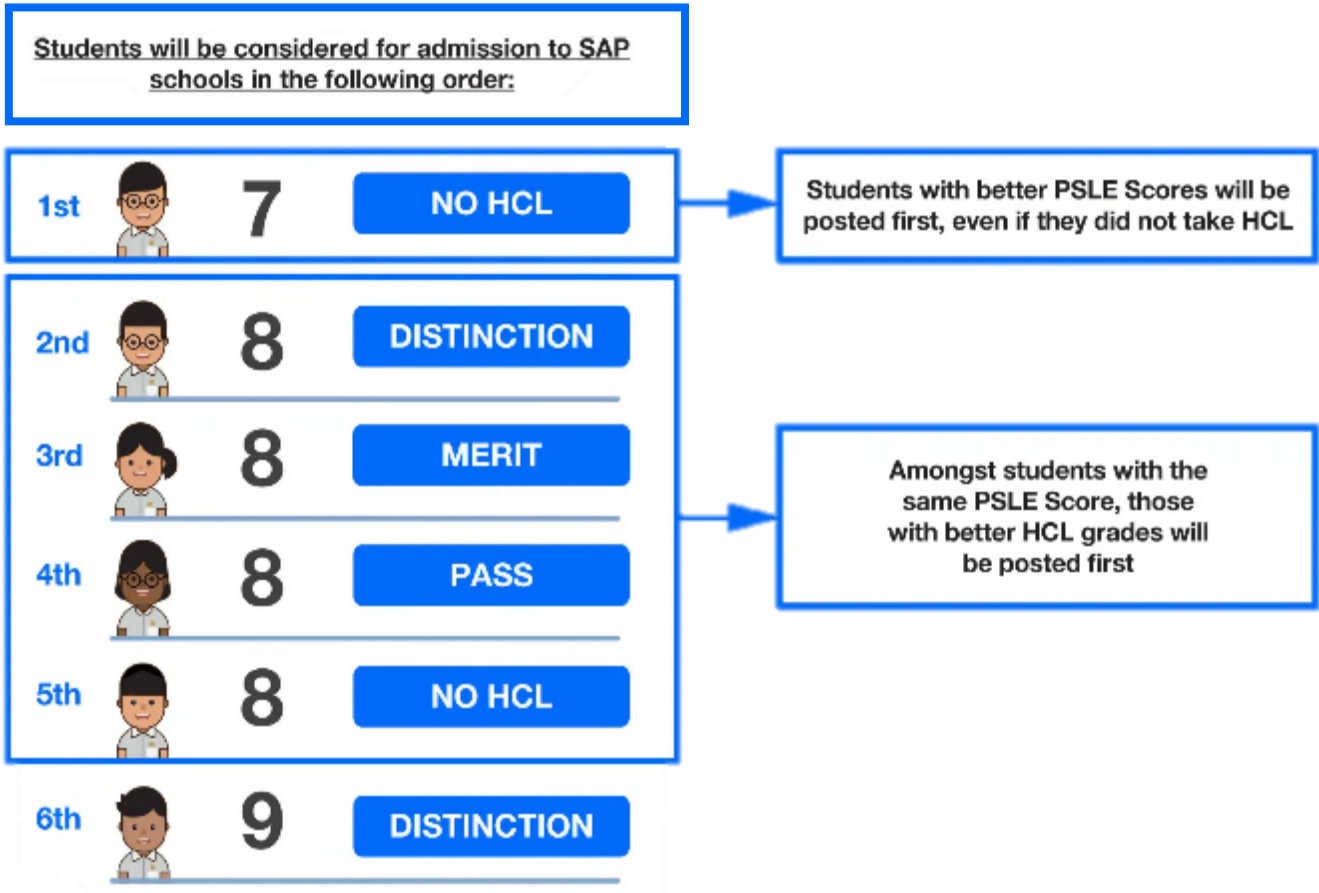
PSLE Score of the last student posted into the school in the respective courses [i.e., the school's Cut-Off Point (COP)]

USE OF HIGHER CHINESE LANGUAGE (HCL) FOR ADMISSION INTO SPECIAL ASSISTANCE PLAN (SAP) SCHOOLS



HCL POSTING ADVANTAGE FOR ENTRY TO SAP SCHOOLS WILL CONTINUE

Students who obtained a Distinction/Merit/Pass for HCL at the PSLE and an overall PSLE Score of 14 or better will receive a posting advantage when applying to SAP schools.



- Students' HCL results are denoted as 'D' (Distinction), 'M' (Merit) or 'P' (Pass).
- Students who obtain (i) a Distinction / Merit / Pass in HCL and (ii) a PSLE Score of 14 or better are eligible for posting advantage to SAP schools.
- Students are ranked taking into account their performance in HCL.
- This posting advantage applies before the tie-breakers for S1 Posting.

EXAMPLE OF AN SAP SCHOOL'S PSLE SCORE RANGE

While students need not take HCL to enter SAP schools, students who pass HCL receive a posting advantage for admission. To reflect this, the PSLE Score ranges of SAP schools include the HCL grades of the first and last student admitted in the previous year via S1 Posting.

Example

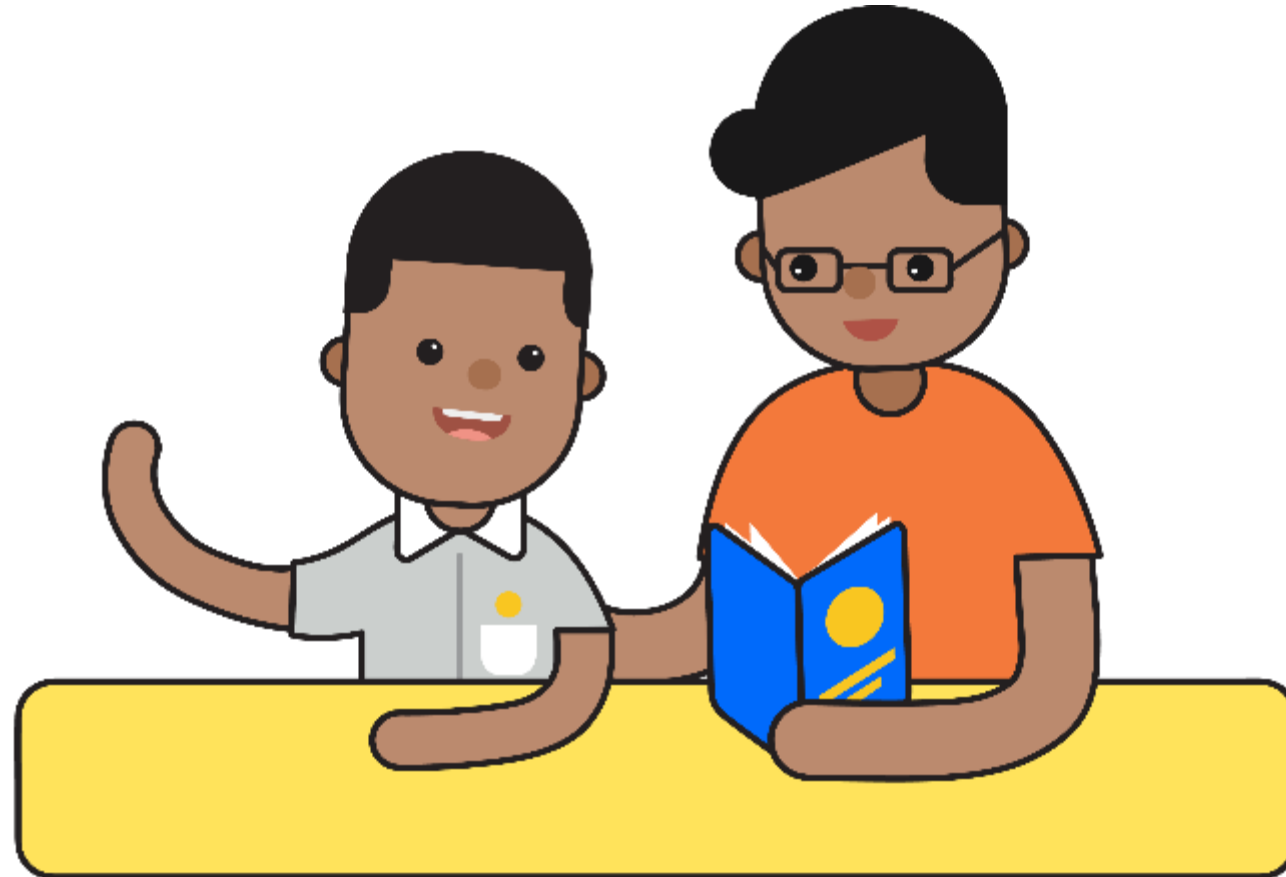
XX Secondary School
PSLE Score range of 2021

Express	5 (D) – 12 (P)
Normal (Academic)	
Normal (Technical)	

PSLE Score and HCL grade of the first student posted into the school in the Express course

PSLE Score and HCL grade of the last student posted into the school in the Express course [i.e. the school's Cut-Off Point (COP)]

CHOOSING SUITABLE SECONDARY SCHOOLS WITH YOUR CHILD

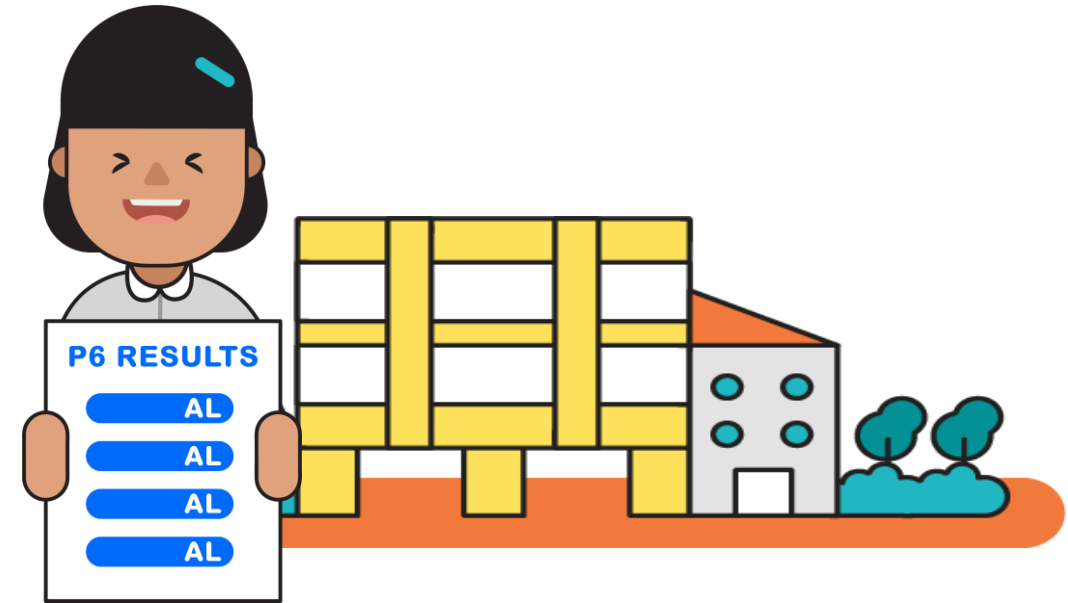


SCHOOL CHOICE JOURNEY

- The PSLE Score ranges as a **useful reference point**
- **Other important factors**
 - Secondary schools' distinctive programmes
 - CCAs
 - ethos and cultures
- **Direct School Admission-Secondary (DSA-Sec)** as an alternative admission pathway



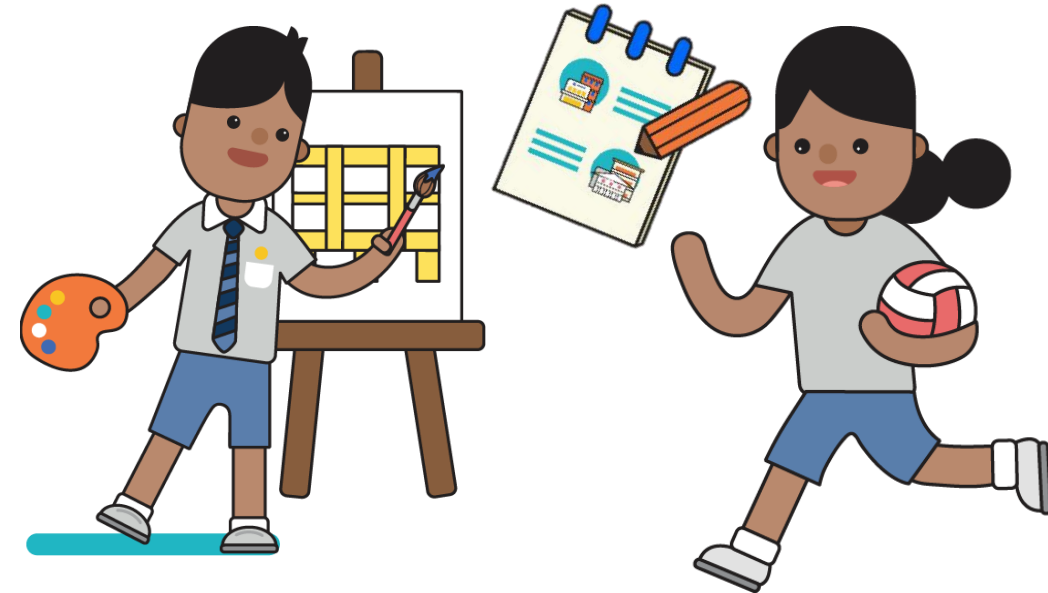
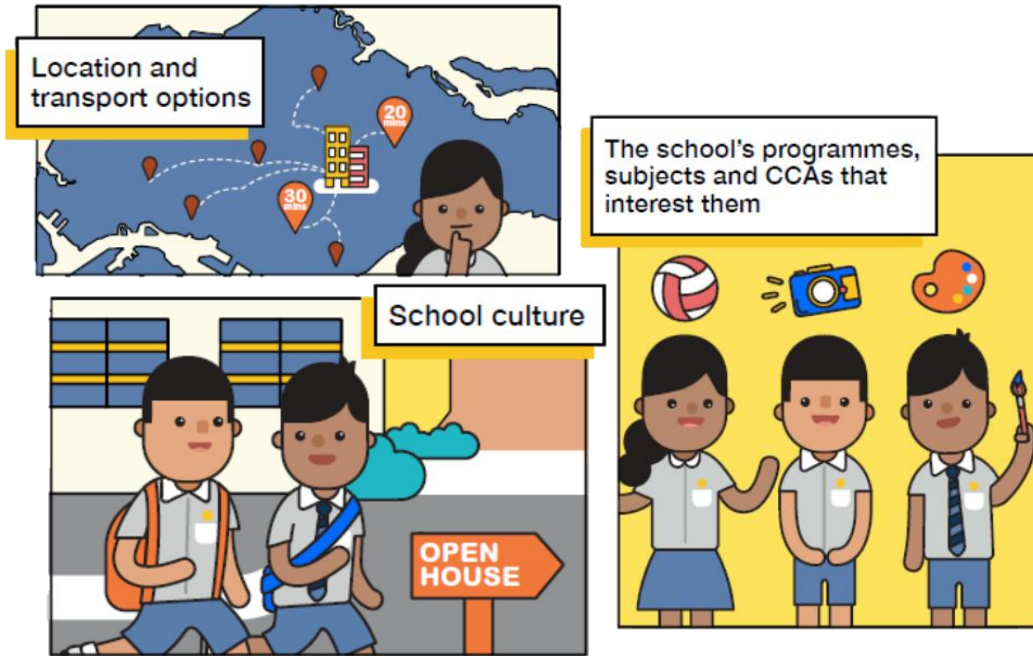
PREPARING FOR THE S1 POSTING EXERCISE



Use all 6 options with a range of Cut-off Points as this will increase your child's chances of being posted to a school of their choice.

Take reference from schools' PSLE Score ranges, which serves as a guide for you and your child to shortlist school choices. Consider at least 2-3 schools where your child's PSLE Score is better than the school's Cut-off Point.

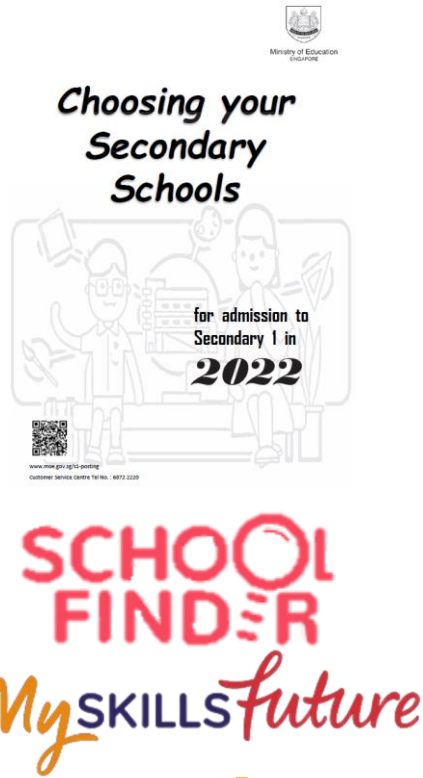
PREPARING FOR THE S1 POSTING EXERCISE



Shortlist schools that offer programmes that cater to the your child's strengths and interests, and that provide suitable learning environments.

Rank your child's preferred school higher in the school choice order. This will increase your child's chances of being posted to that school, if tie-breakers are required.

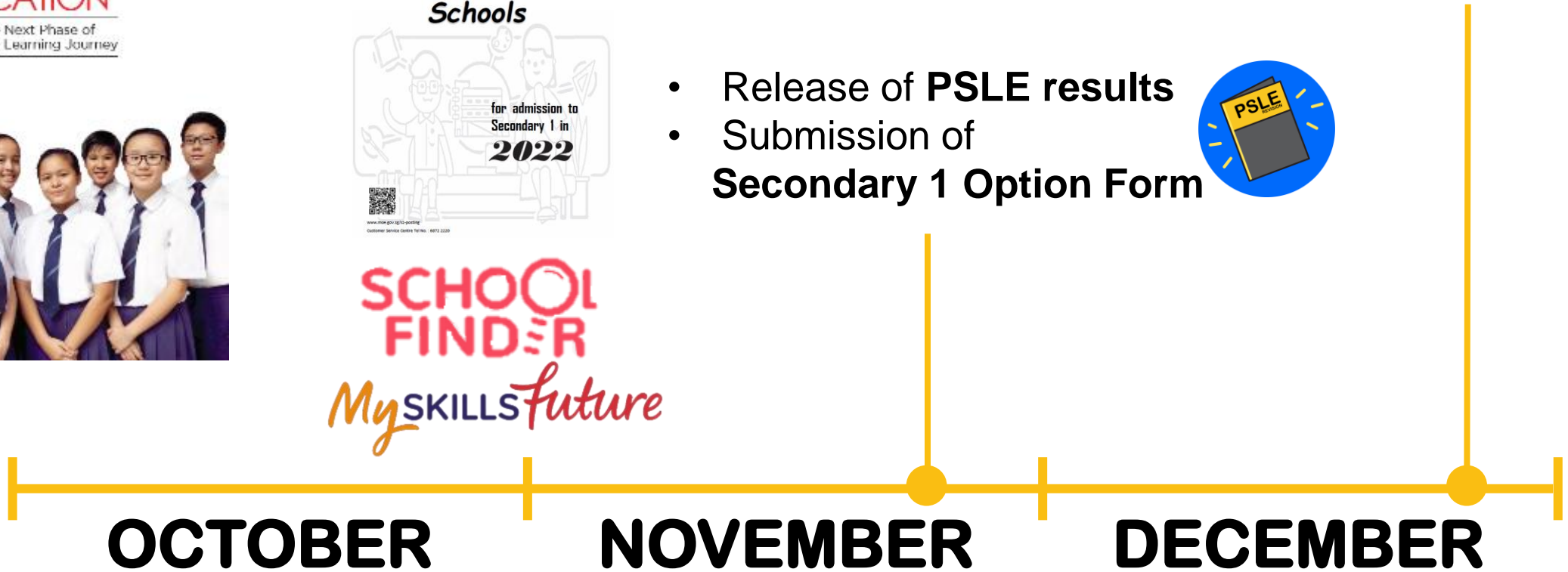
PREPARING FOR THE S1 POSTING EXERCISE



- Release of **PSLE** results
- Submission of **Secondary 1 Option Form**



- Release of **S1 Posting** results



TIPS FOR PARENTS!

Be open and flexible when discussing your child's preferences, needs and choices.

Manage your own expectations and do not project these expectations onto your child.

Have regular conversations with your child to understand more about his/her interests and aspirations.



Affirm your child and offer support when he/she shares his/her plans with you.

DIRECT SCHOOL ADMISSION- FOR SECONDARY SCHOOLS



DIRECT SCHOOL ADMISSION- FOR SECONDARY SCHOOLS



Application before taking the PSLE.

Based on their talent in sports, CCAs and specific academic areas.

If admitted through DSA-Sec, not allowed to:

- participate in Secondary 1 (S1) posting process.
- transfer to another school.



DIRECT SCHOOL ADMISSION- FOR SECONDARY SCHOOLS

Explore School Choices

View schools' websites for more information



Jan - May

May - Jun



Apply

submit your child's application online through the DSA-Sec portal

Indicate up to 3 choices and 3 talent areas. You may indicate up to 2 talent areas for the same school. If you want to apply for 2 talent areas at the same school, you must indicate both as separate choices.

Attend Interviews/ Auditions

Different schools have different selection processes. If shortlisted, your child will have to attend e-interviews and e-auditions conducted by DSA schools at their primary school.



Jun-Aug



Select Preferred School

Choose up to 3 school choices in order of preference using the DSA-Sec Portal

Receive School Allocation Results

Together with the PSLE results



Nov

Oct

OTHER RESOURCES

1

SchoolFinder Tool



<https://go.gov.sg/secschoolfinder>

2

“Welcome to Secondary School” video



<https://go.gov.sg/welcome-to-secondary-school>

3

Secondary School Education Booklet



<https://go.gov.sg/p/sle-sec-sch-brochure>

4

ECG Parent Guide



<https://go.gov.sg/parent-guide>

FIND OUT MORE ON THE PSLE-FSBB MICROSITE!



<https://go.gov.sg/pslefsbb>



THANK YOU

